

# Spain's DILVE experience: A BIP repository as data adapter for publishers

32nd International Supply Chain Seminar  
Frankfurt, 5 October 2010

Jesús Peraita - Neturity SL

Promoted by



FEDERACIÓN DE GREMIOS  
DE EDITORES DE ESPAÑA

# What is DILVE?

- DILVE ([www.dilve.es](http://www.dilve.es)): the **Spanish Books-in-print** repository
- Managed by the Spanish Publisher's Association (*Federación de Gremios de Editores de España - FGEE*)
- *Free of charge*: restricted to Spanish publishers, but data *available to international professionals* of the book chain.
- Bibliographical data directly *managed by publishers*
- More than: 650 publishers, 160 distributors, 600 bookstores
- Over 270.000 records (Oct 2010)
- **DILVE acts as data adaptor and format transformer for publishers**

# DILVE as data adaptor

- Besides *data extraction managed by end-users*, DILVE allows publishers to **push data** to particular environments requiring specific data formats and transmission means:
  - ISBN Agency for registration: text & XML files / HTTP
  - ENCLAVE (Spanish National Library): xml-MARC21 / FTP
  - Libranda (eDistributor): ONIX 3.0 / FTPES
  - SINLI (Spanish Commercial interchange format): plain text / e-Mail
- DILVE carries out specific *business consistency checks* for each environment before sending data
- All the procedures are *transparent for the publisher* and require one single upload process to DILVE and one push of a **Send** button

**enclave editores-bne** (Dec 2008 - Nov 2010)

***Integration of copyrighted material  
in digital public libraries***

*<http://bdh.bne.es/bnearch/>*

**Promoted by:**

- *Biblioteca Nacional de España* (**BNE**)
- *Federación de Gremios de Editores de España* (**FGEE**)

**Partially funded by:**

- *Ministerio de Industria, Comercio y Turismo*

**Bibliographic data provided by DILVE**

**Technical co-ordination by Neturity SL**

# Project objectives

- Include books under rights in the *Biblioteca Digital Hispánica* (BDH) (Primary objective !)



- Detect generic problems & possible solutions
- Define models & infrastructure for other public libraries
- Stimulate publishers to define their digital plans
- Foster the creation of new agents in the e-book chain
- Promote media awareness
- Break the *chicken & egg* situation for digital books:
  - "*There's no offer because there's no demand because there's no offer...*", but a small was enough to start the ball rolling

# Data requirements

- BDH already has the *complete basic bibliographic record* of the printed version
- *"Enriched" data is provided by the publisher*
- Required data for Enclave:
  - **Main description** - plain text format (ONIX L33 01)
  - **TOC** - plain text format (ONIX L33 04)
  - **Cover image** - jpg, png (ONIX L38 04)
  - **Excerpt** for on-site browsing - pdf (ONIX L33 23)
  - One **URL** per book, to in e-distributor / e-retailer environment
  - **Full text** - pdf (ONIX L33 34) Internal BNE use only for indexing in *Autonomy*

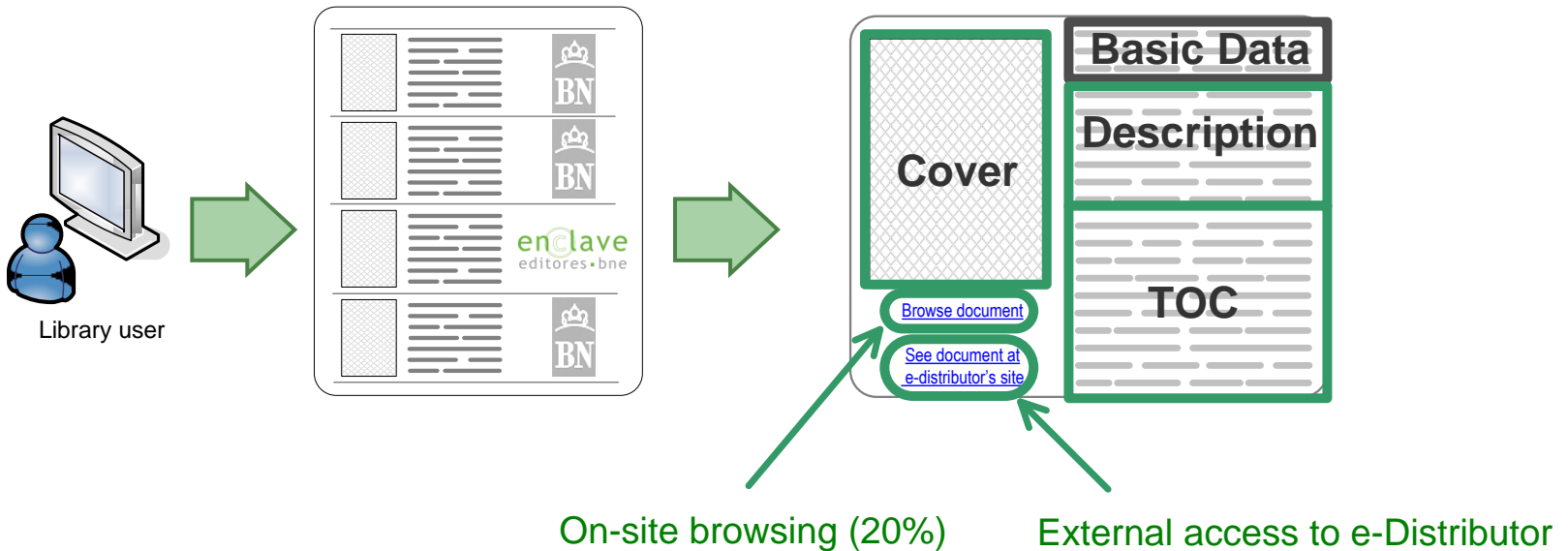
>>> All data transfers to BNE come from DILVE <<<

# User navigation at BDH (1)

**1**  
User carries out a search in BDH. Full text search is possible

**2**  
A listing of matching records is displayed. **Enclave** records are identified

**3**  
User selects an **Enclave** record for detailed view. Up to 20% can be browsed on-site. Full document can be consulted/bought at e-distributor's site



# User navigation at BDH (2)



Fragment

External URL

enclave

Título	La ciudad y los derechos humanos - : una modesta proposición sobre derechos humanos y práctica urbanística
Autor	Caz Enjuto, Rosario del Gigosos Pérez, Pablo Saravia Madrigal, Manuel
Datos de edición	Madrid Talasa
Fecha	2002
Tipo de Documento	<b>Basic bibliographic data: BNE</b>
Materia	Urbanismo - Aspectos sociales Derechos sociales y económicos
Descripción física	133 p.
PID	2152892
CDU	711.4:316.34342.72/.73
ISBN	84-88119-90-9

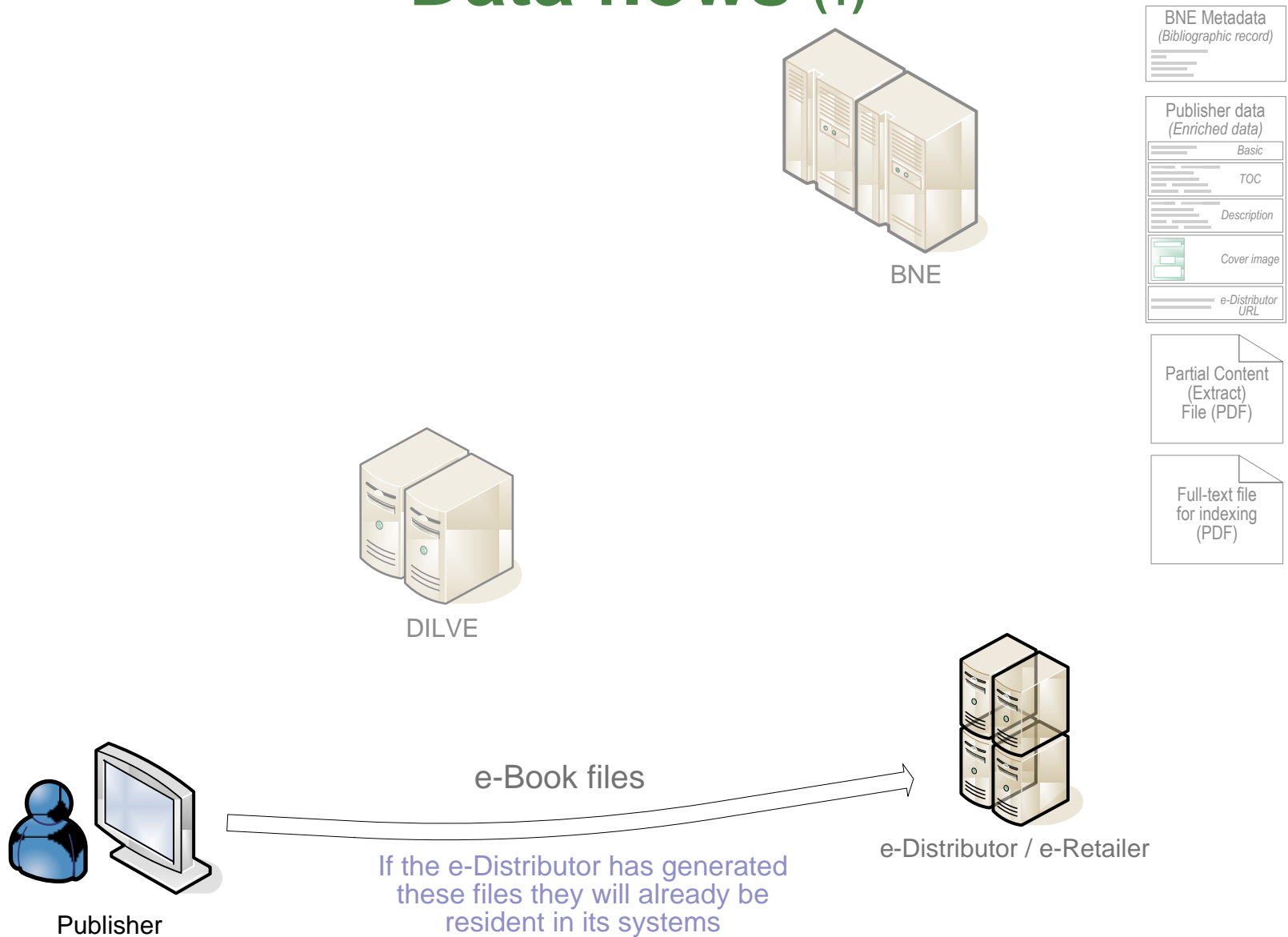
**Resumen**

Se impone recuperar una visión más global del urbanismo sostenible; recuperar el urbanismo social, ahora que la desigualdad de nuestro mundo global se agudiza en las ciudades. Y el horizonte hacia el que dirigir la renovación del pensamiento y la acción urbanística no puede ser otro que el de los derechos humanos; el de las garantías de dignidad y bienestar. No puede existir armonía ciudadana, mejoras medioambientales ni una adecuada adaptación a las nuevas tecnologías sin ese mayor respeto (menos complaciente) a los derechos humanos de todas las personas: de las que están, de las que llegan a la ciudad.

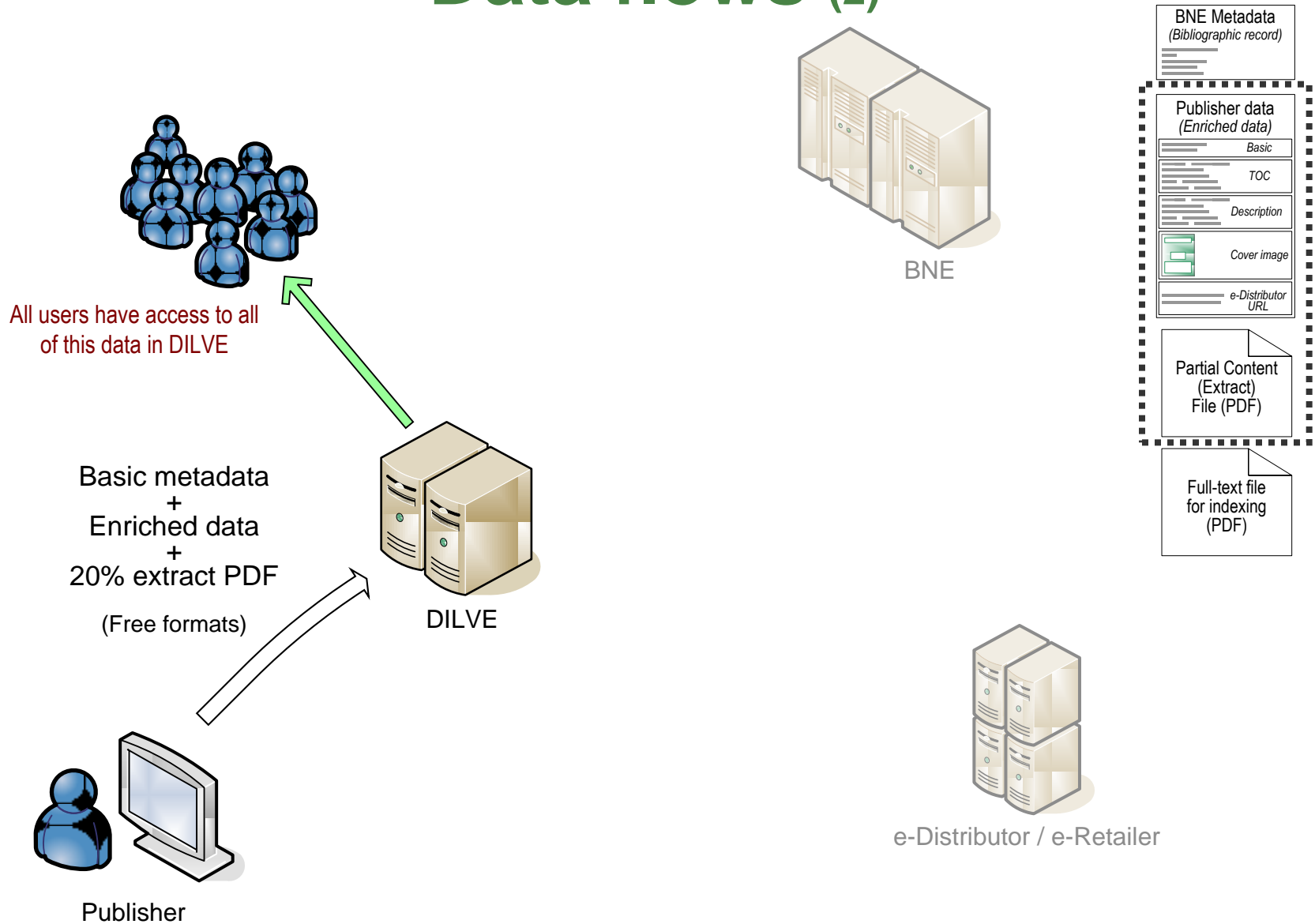
**Contenido**

1. El lugar del derecho  
2. Entradas y salidas  
**Book TOC: Publisher**

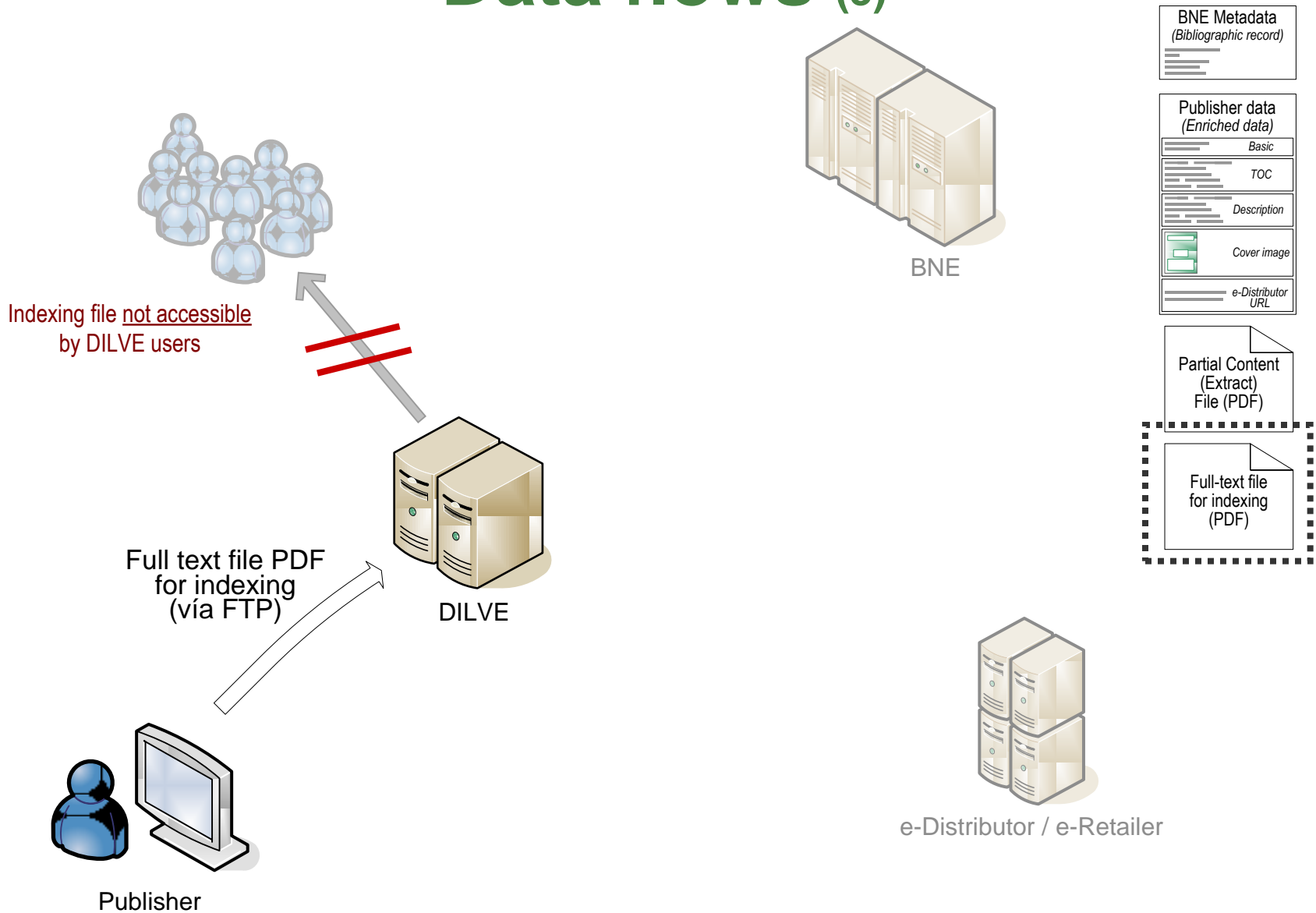
# Data flows (1)



# Data flows (2)

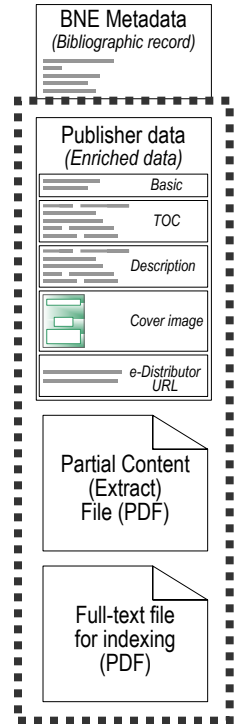
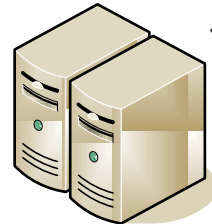
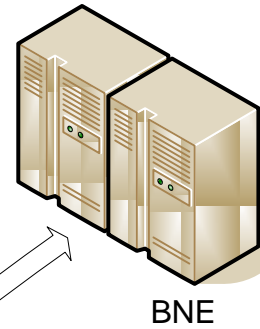


# Data flows (3)



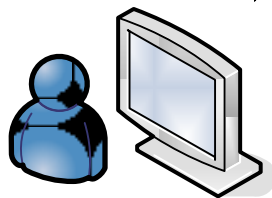
# Data flows (4)

Basic metadata  
+  
Enriched data  
+  
20% extract PDF  
+  
Full text indexing file PDF  
(ENCLAVE formats)



- A MARC-XML metadata record is generated
- Files are renamed as needed
- The package is zipped and FTP'd to BNE

Each publisher triggers in DILVE the upload process to ENCLAVE



Publisher

# Enclave's Current status

- Started December 2008 - Ends November 2010
- Officially presented in LIBER (Madrid) in October 2009
- Open to the public since November 2009
- Two calls for participation: July 2009 & January 2010
- 142 publishers and over 3200 books selected for inclusion

# Enclave's Conclusions

- As expected, Enclave has made a *big “push”* to the digital publishing chain in Spain
- Great *public success* for BDH
- Overall *data model very convenient* for publishers
  - However: Full text indexing via PDF file (BNE requirement) problematic for books in ePub format
- Record retransmissions due to problems in metadata *down from 14%* in first call *to 6%* in second call
- *URLs for e-distributors are very volatile* and an alternative updating mechanism has been set up (Excel files)

# Further Information

## General Documentation

[www.dilve.es](http://www.dilve.es)

## Support / Information

[dilve@dilve.es](mailto:dilve@dilve.es)

## Enclave

- Website: <http://bdh.bne.es/bnearch/>
- Docs: [www.bne.es/es/enclave](http://www.bne.es/es/enclave) - [www.dilve.es](http://www.dilve.es)

# Thank you !